



Technical Overview

Intuitive DX

Using print data to discover process automation opportunities

Introduction

The world of print has changed drastically over the last 5-10 years, with customers being more vigilant over their printing costs, their relationship to the environment and the need to reduce time wasted on inefficient internal processes.

This document introduces Intuitive DX, a suite of pre-built dashboards that help identify hidden user printing behaviours and shed light on these operational processes. There is information contained within the print data which will highlight opportunities for digital document processing.

Intuitive for PaperCut MF

In April of 2022, Intuitive released version 3 of Intuitive for PaperCut MF. A set of modern, pre-built dashboards that answered key customer questions in relation to their printing estate. The investment in this product has enabled customers to revolutionize their understanding of the print estate by leveraging the data held within PaperCut MF.

Intuitive for PaperCut MF V3.0 provides the following analysis

- Cost – Analysis of total cost by Department and average cost by user
- User Analysis – Details of individual users and the ability to drill through to a detailed user profile page
- Volume Analysis – Year on Year comparison of volumes across the estate
- Printer Analysis – Comparison of volumes across printer types and locations

Using our expertise and experience both with PaperCut MF and document processing projects, Intuitive DX seeks to delve deeper into user behaviours and identify where best to invest in new technologies.

The Benefits of Intuitive DX

Intuitive's approach is to provide embedded, pre-built dashboards that quickly increase the value of the PaperCut solution.

1. Quick adoption for existing customers – Four pre-built dashboards that use existing Intuitive for PaperCut data
2. New ways of navigating through print data, more powerful and deeper analysis of user behaviour
3. Look and feel – Uses Intuitive's modern dashboard styling that slots into existing solutions seamlessly
4. Identify areas for improved productivity, efficiency and potential savings of your customers processes that can lead to opportunities of digital document processing

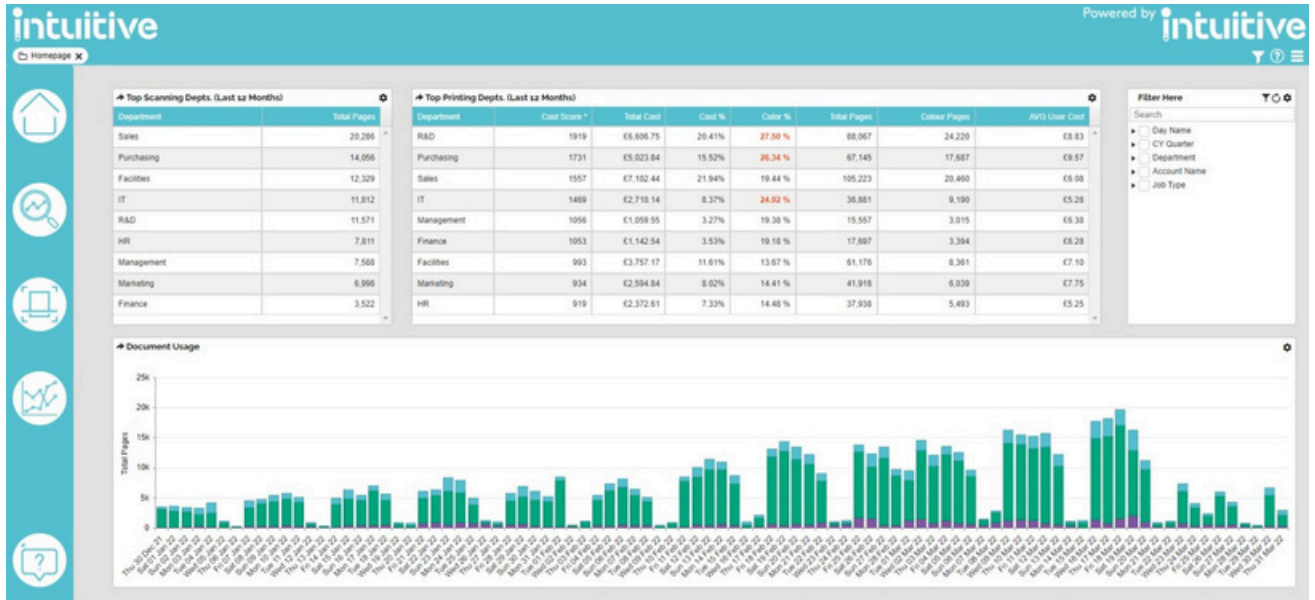
Intuitive DX Dashboards

Intuitive DX Homepage

The Homepage dashboard gives you an overview of the top departments' volumes over the last 12 months, and a detailed Document Usage breakdown of all activities over the last 90 days. Users can drill

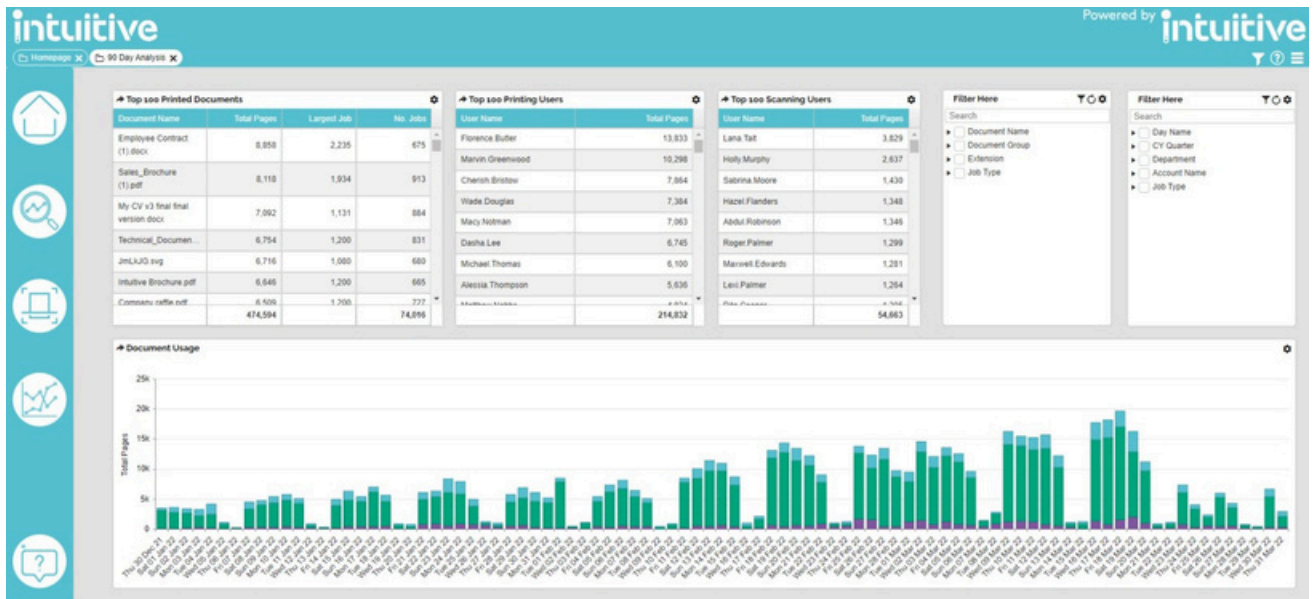
into the Document Usage component to show the jobs performed on that given day. With the top departments' components, they can drill into a single department to show a filtered view on the 90 Day Analysis dashboard.

Additionally, a "Cost Score" has also been introduced to identify notable departments for investigation. The cost score is a weighted metric of the overall cost, colour % of their printing, and the average user cost.



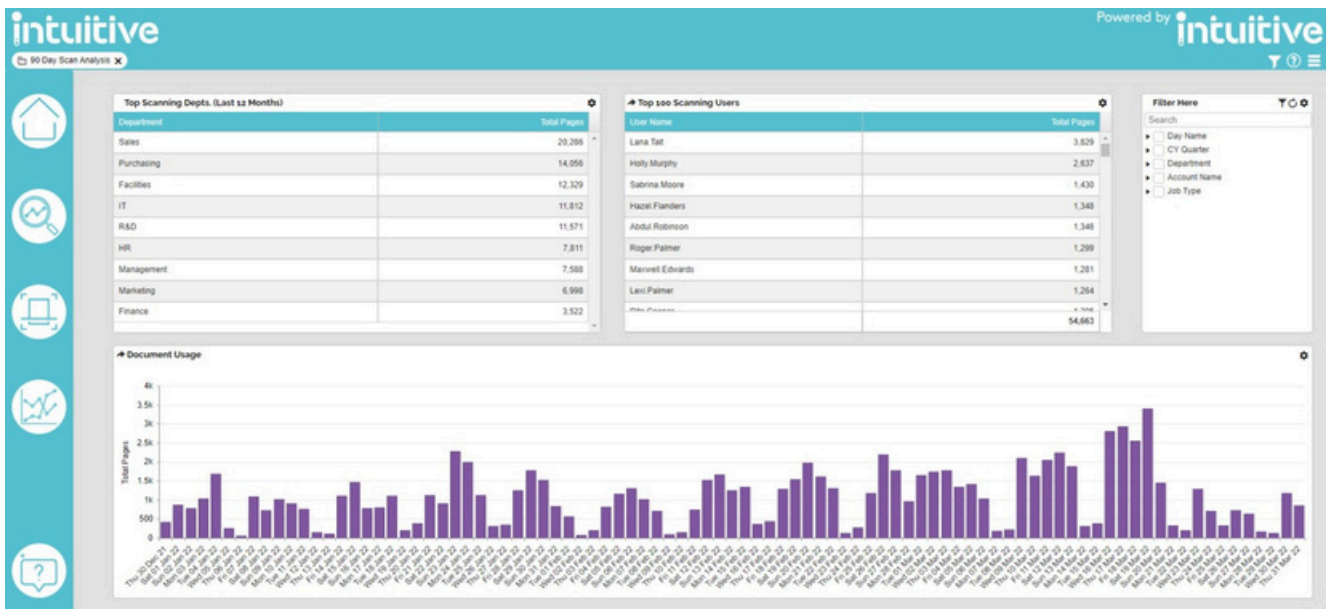
90 Day Analysis

The 90 Day Analysis dashboard illustrates the top 100 documents printed, and the top 100 users in the organization by pages. Users can also delve further into the Document Usage components' data by using the filters on the right to look for particular Document Names or Groups.



90 Day Scan Analysis

The 90 Day Analysis screen gives you a detailed, 90 day view on all the scan activity. Top scanning departments and users can be identified, and individual jobs can be drilled into via the Document Usage component.



Comparison

The Comparison dashboard allows you to pit the Print and Scan activity of different accounts and departments against each other. This dashboard allows the user to identify where trends exist in one department that do not correlate with the rest of the organization.



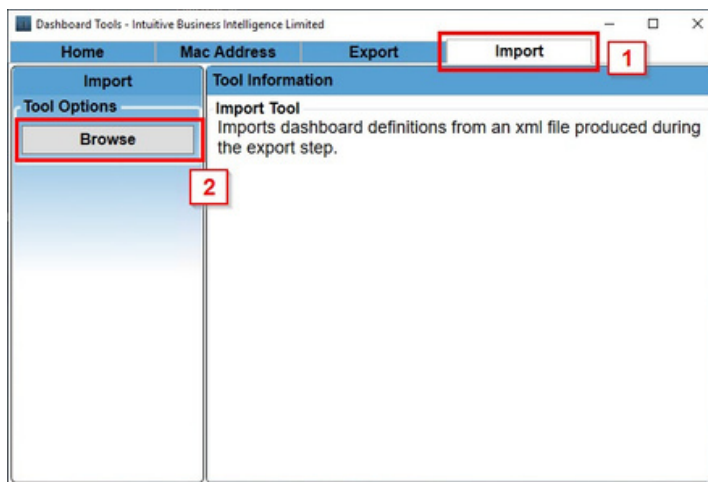
Installation Process

The installation process of Intuitive DX relies on an existing installation of Intuitive for PaperCut MF (V3.0 onwards). Intuitive for PaperCut MF will need to have been fully set up beforehand, and will need at least 3-12 months of data.

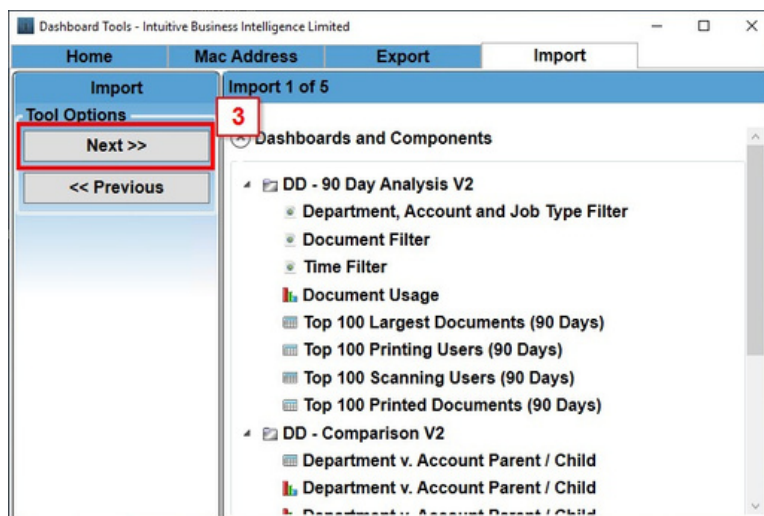
To deploy the dashboards, you will first need to download the Intuitive DX XML from our partner portal page, then copy it onto the Intuitive server. The dashboard XML is imported via the Server Tool, which is normally located as a shortcut on the desktop of the Intuitive server.

The steps below show the process of importing the dashboards:

1. With the Server Tool opened, click the “Import” tab at the top.
2. Selecting the button “Browse”, navigate to the XML you have copied onto the Intuitive server.

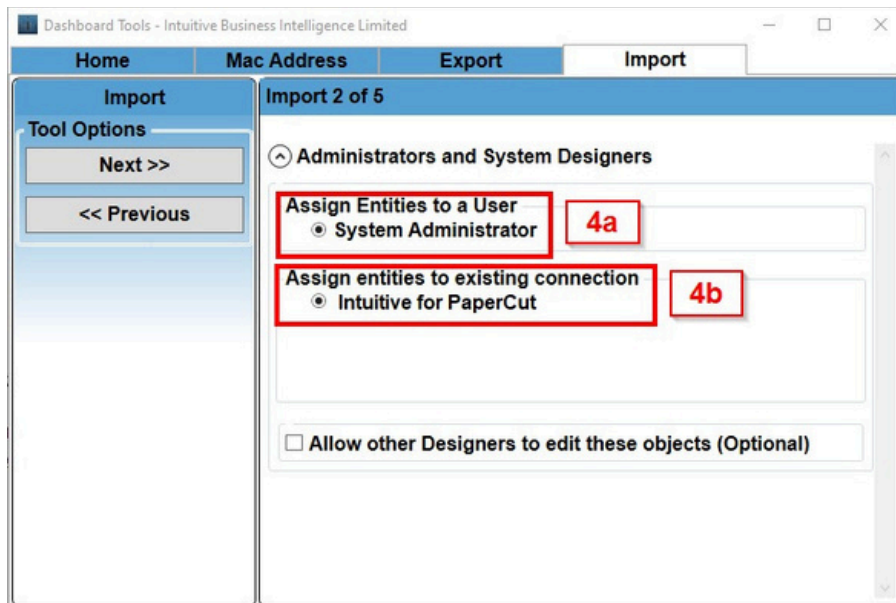


3. Import 1 of 5 - You will see the available dashboards and components in this screen. Click “Next” to proceed.
- 4.

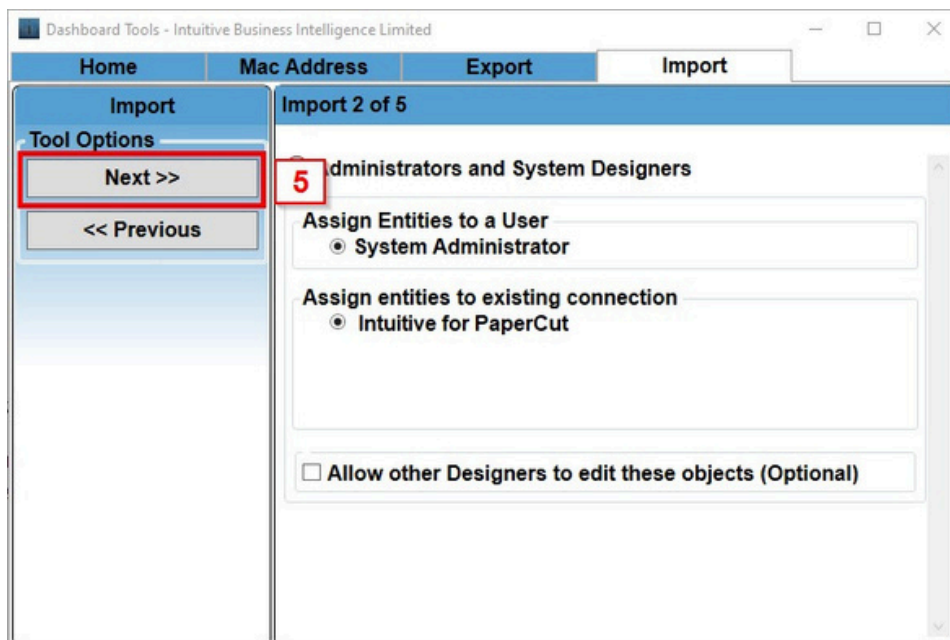


5. Import 2 of 5 - On this page we have two steps to perform:

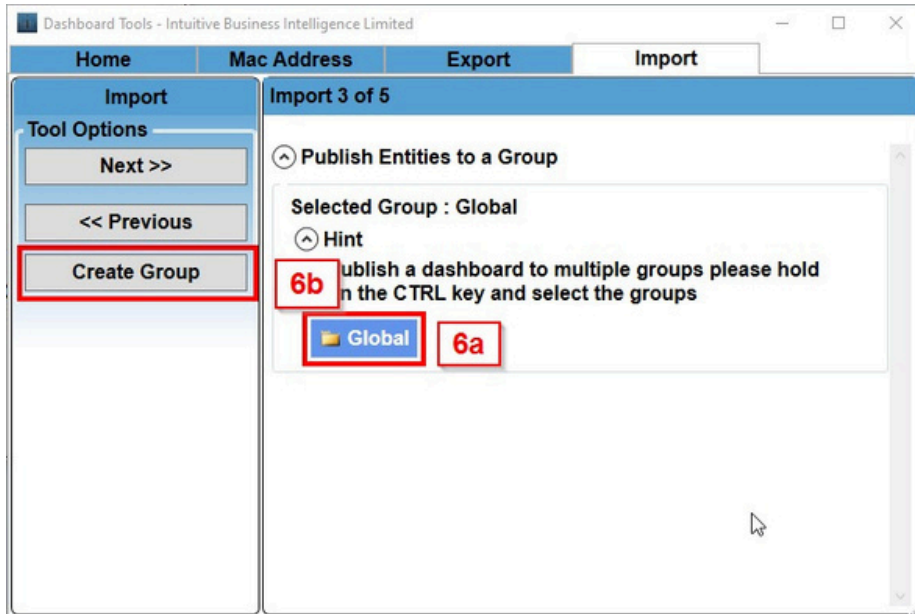
- a. Assign the entities to one of the users onscreen. I will select **System Administrator**.
- b. We now need to select an existing connection as we need to read the existing PaperCut data. Select the option **Intuitive for PaperCut** to use the PaperCut data.



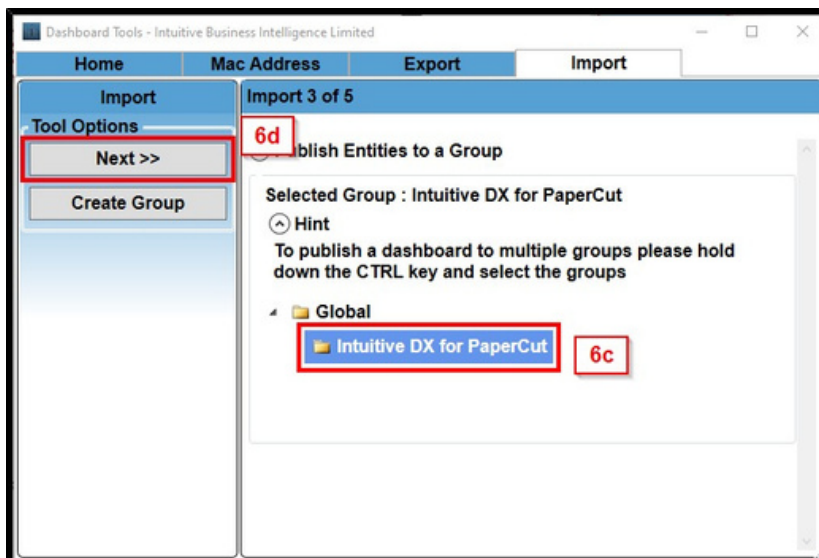
6. With those two options selected, click "Next".



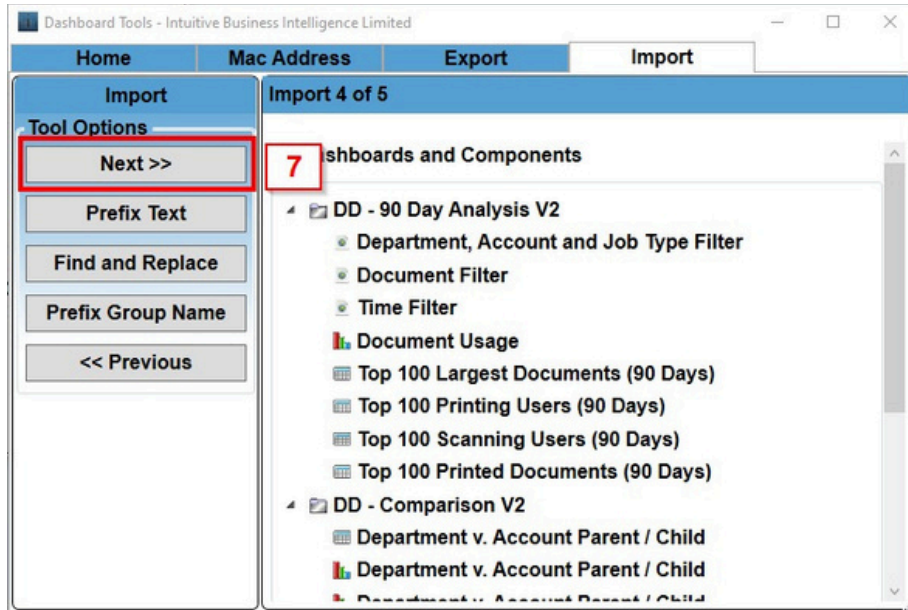
7. Import 3 of 5 – The dashboards need to be placed in a new group.
 - a. Select “Global”
 - b. Then click “Create Group” on the left



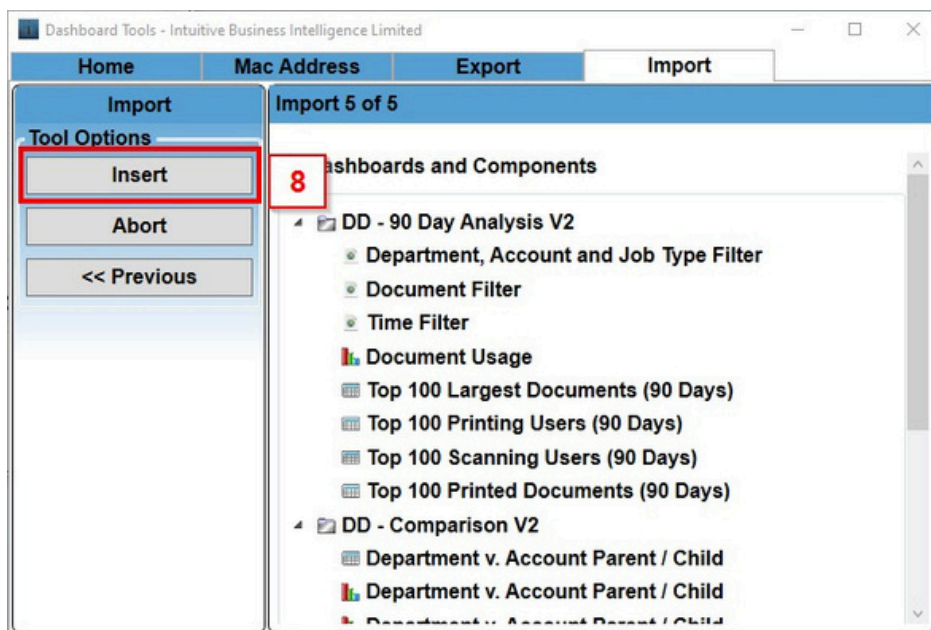
- c. With this new group, name it **Intuitive DX for PaperCut**, and ensure that the new group name is highlighted.
 - d. Then click “Next”.



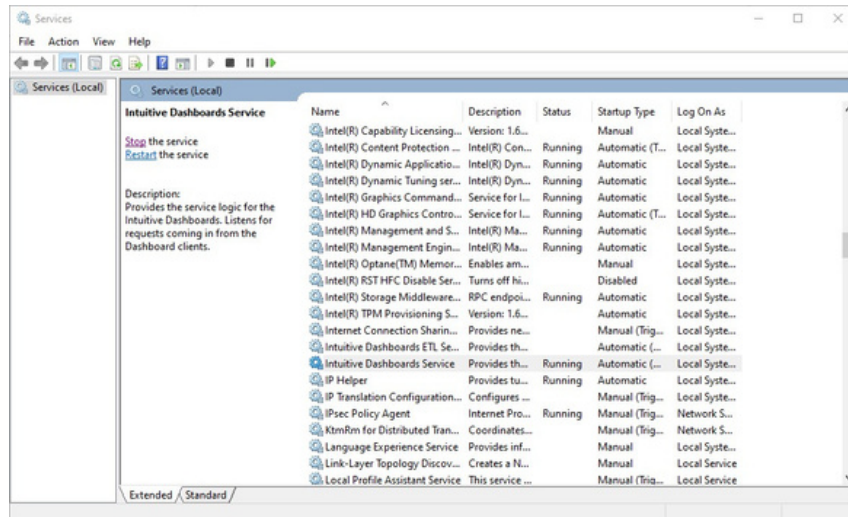
8. Import 4 of 5 - Click "Next"



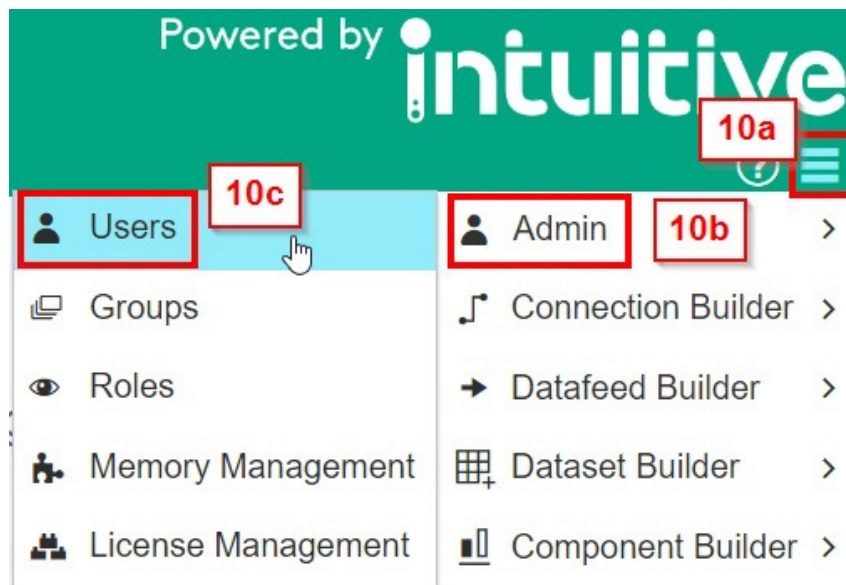
9. Import 5 of 5 – You have the option to abort the process, and go back to make any other changes. Otherwise, click "Import" to start the import process



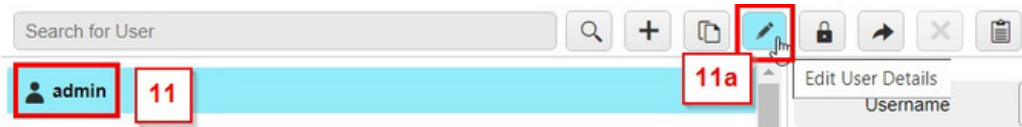
10. With the dashboards imported, the **Intuitive Dashboard Service** needs to be restarted on the Intuitive server. At a time when either no users are accessing the dashboards, or a pre-planned period of maintenance, stop and then start this service via Windows Services.



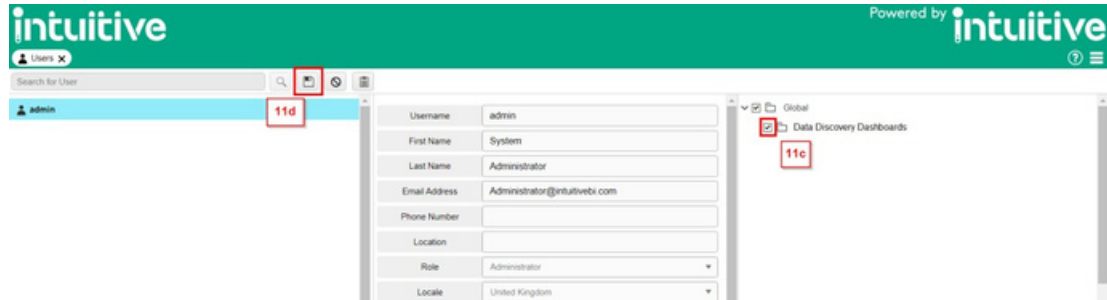
11. With the service restarted, we now need to grant users access to these dashboards.
 - a. Logging in with either an admin or UserAdmin account, head to the main menu
 - b. Highlight Admin
 - c. Select Users



12. Select your user of choice on the left
 - a. Then click the pen-shaped Edit icon



- b. Tick the box next to our group name
- c. Finally, save the changes



13. Lastly, we can now open these dashboards for analysis
 - a. In some cases, data make take a few minutes to fully populate. Please allow for this process to complete, which should take at the most 15 minutes.